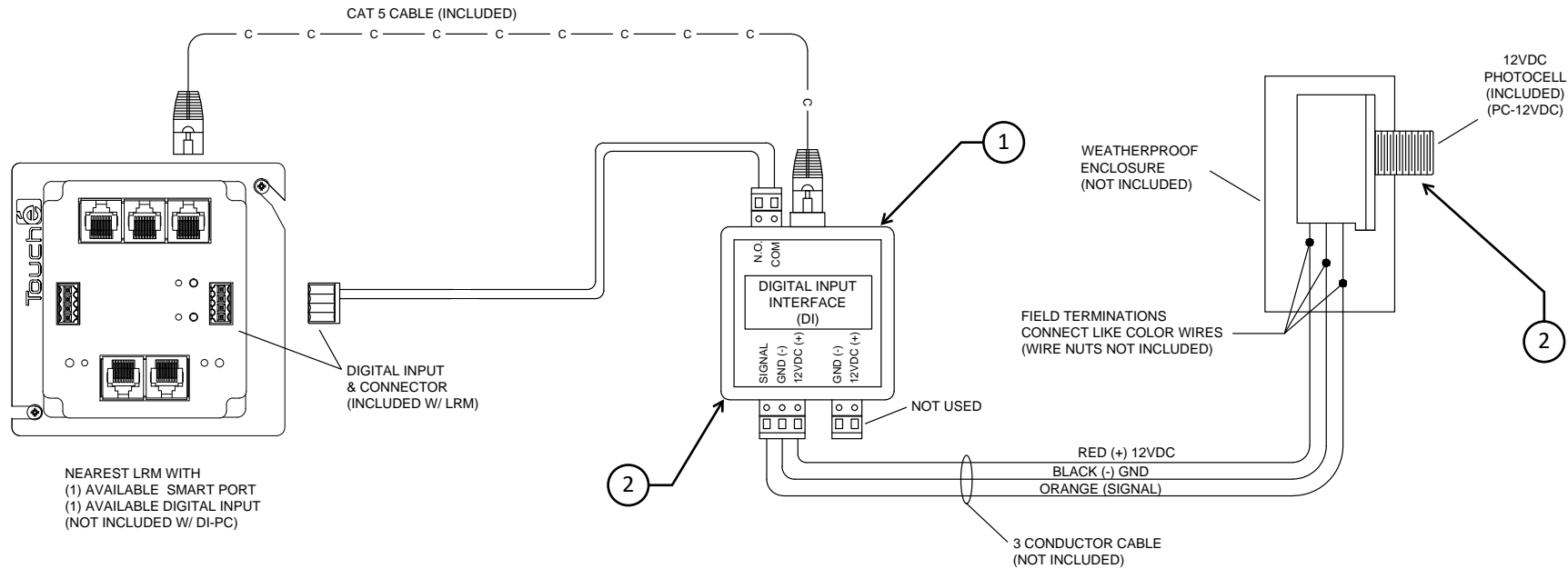


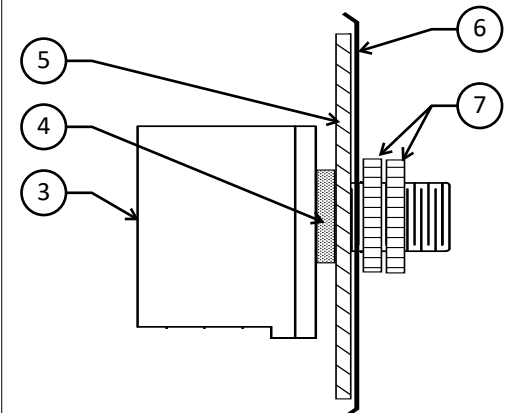
PHOTOCELL WIRING



TIPS / NOTES

1. MOUNT DI-PC WITHIN 30' OF PHOTOCELL. IF NEEDED CAT5 CABLE AND 2 CONDUCTOR CABLE TO LRM CAN BE EXTENDED - IF EXTENDING CAT5 CABLE DO NOT USE COUPLERS - MUST RUN NEW CABLE
2. ONCE LRM IS POWERED ON VIA THE BRANCH PORT, THE PHOTOCELL AND DI CAN BE TESTED. IF WIRED CORRECT COVERING THE PHOTOCELL WITH THE PALM OF YOUR HAND WILL CAUSE AN AUDIBLE CLICK IN BOTH THE PHOTOCELL AND THE DI. IF CLICK IS NOT HEARD, ENSURE LRM IS POWERED AND VERIFY CABLING CONNECTIONS.
3. PHOTOCELL HEAD.
4. PROVIDED RUBBER GASKET.
5. PROVIDED COVER PLATE FOAM GASKET.
6. PROVIDED COVER PLATE.
7. PROVIDED PLASTIC LOCK RINGS.
8. ENSURE COMPONENTS 3 THRU 7 ARE PROPERLY INSTALLED AND TIGHTENED.

PHOTOCELL ASSEMBLY



CONNECTIVITY DIAGRAM

COMPONENT LIST

1. MSTR-DVOLT-2 (DOOR OPEN)
2. SBB1
3. LRM OR LIM
4. RD PANEL
5. SW-TS-M
6. SMOAS
7. TSUI
8. RM
9. WS-TS-C
10. SS-2B
11. SS-SF

CABLE LEGEND

- = éNET (CAT5)
- = BRANCH NETWORK (CAT 5)
- = SMART NETWORK (CAT 5)
- = 16/2 POWER CABLE

NOTE: ALL COMPONENTS MAY NOT BE PRESENT. DIAGRAM IS ONLY INTENDED TO SHOW CONNECTION POINTS BETWEEN COMPONENTS

