

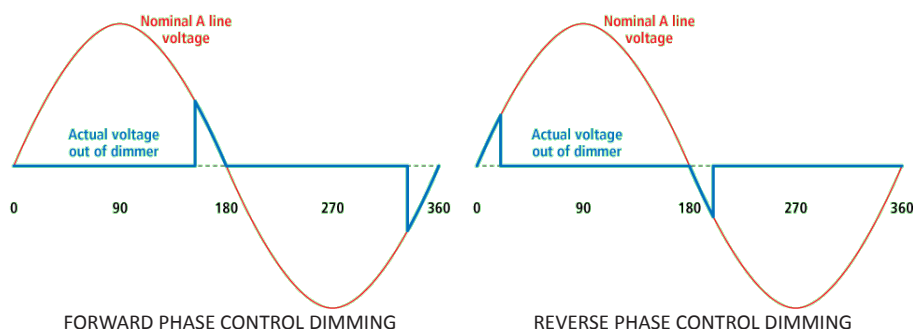
# LINE VOLTAGE & 3-WIRE DIMMING MODULE

## FEATURES-



- Line Voltage/3-Wire Dimming Modules (DIM-2W/3W-120/277) are software configurable for either forward or reverse phase control. This provides the ultimate in flexibility for specification and installation.
- These dimmers utilize a relay ahead of the dimmer for complete disconnection from the source voltage when the dimmer is off.
- Dimming Modules are completely compatible with 3-wire fluorescent dimming ballasts (Hot, Dimmed Hot and Neutral).
- Dimming Modules allow for a fine granular control down to 1% (or as limited by the dimming ballast specifications when utilized in a 3-wire dimming application).
- Dimming Modules are compatible with and auto-sensing for line voltages of either 120 VAC or 277 VAC.
- Dimming Modules communicate with the Building Management Server to report:
  - The dimmer's current dimming level (0-100% on)
  - The line source state (available or off)
  - The communication status (active / not available)
  - The module's "health" (if the module is defective)
- Dimming Modules are interchangeable with all other RD style relay and dimming modules, providing a higher level of flexibility than currently available in the market.

**DIM-1-2W/3W-120/277**



CONFIGURATION OF REVERSE OR FORWARD  
PHASE CONTROL IS SOFTWARE CONFIGURABLE

## SPECIFICATIONS

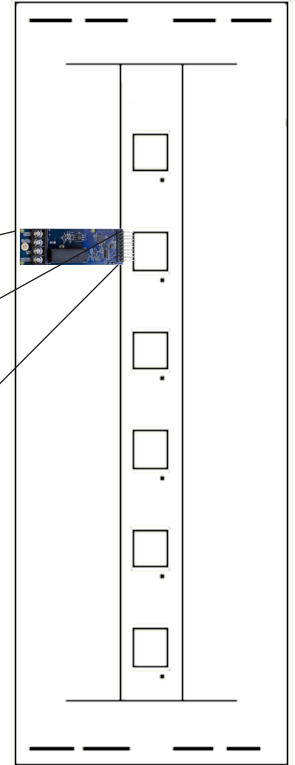
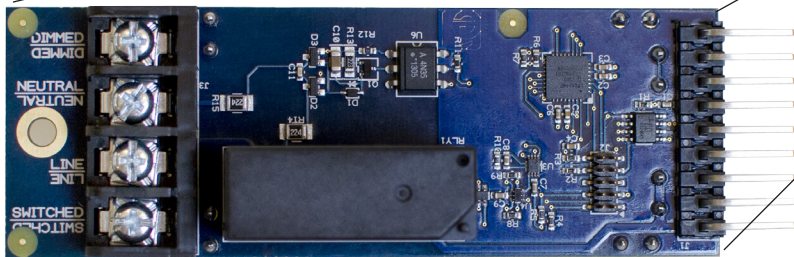
Max Voltage:	277VAC
Max Amperage:	8.3 FLA (1000W @ 120VAC, 2300W @ 277VAC)
Rated For:	2-Wire Line Voltage Dimming (Incand, ELV, MLV) 3-Wire Fluorescent Dimming Ballast
Terminal Rating:	#10 AWG
Step Percentage:	1% (or as limited by the dimming ballast for 3-wire dimming applications)

# LINE VOLTAGE & 3-WIRE DIMMING MODULE

**DIM1-2W/3W-120/277**

All modules utilize the same footprint and are interchangeable. Module type, module slot location, line status, and module state (on, off, or level) are automatically communicated with the system upon power-up. The local RD touchscreen displays provide local interfacing including module status and control.

RELAY-DIMMER PANEL  
(RD-32 OR RD-48)



LINE VOLTAGE &  
3-WIRE DIMMING MODULE  
(DIM-2W/3W-120/277)

## PART NUMBER

	<b>DIM1</b>	<b>2W/3W</b>	<b>120/277</b>
DIM:	Dimming Module <sup>1</sup>		
2W/3W:	Supports 2-Wire and 3-Wire Dimming		
120/277:	120/277 VAC Rated		

<sup>1</sup> Supports a maximum of 8.3A at either 120VAC (1000W) or 277VAC (2300W).